

ISLE OF RYDESCGATE

Help Create Rydesgate High Street

Hi!

Be a part of the **Mooch**
and **Historic England**
Twin Towns project!
#HistoricHighStreets

Artwork @KavelRafferty

Welcome to the **ISLE OF RYDESGATE**

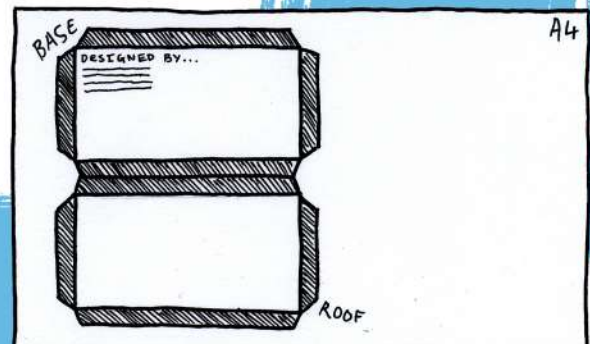
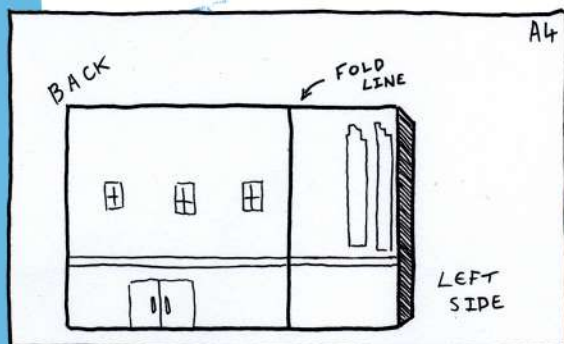
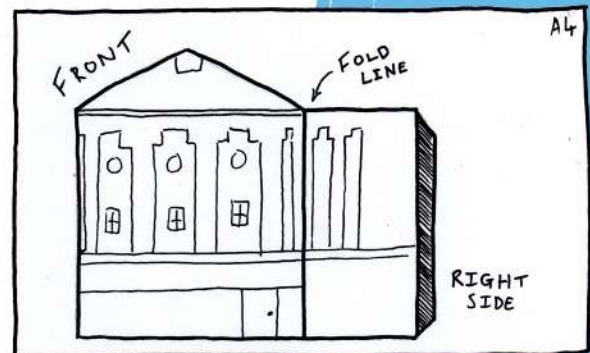
Mooch has been commissioned by Historic England as part of their High Street Heritage Action Zone Cultural Programme called **Twin Towns** and is 1 of 6 creative practices that will connect 2 HSHAZ towns.

We will be twinning Ramsgate in Kent and Ryde on the Isle of Wight, coastal resorts with many connections. Using the varied and historic architecture in these town centres as inspiration, we will create public exhibitions of a new version of the buildings on a map of a fantasy island called Rydesgate. The aim is also to encourage a leap of imagination, invite people to design their own shop and re-think how we use town centres.

But first we need templates for the buildings...

Your job is to create a template for a 3D model of the buildings listed on Page 4. We are asking you to choose 1 building (or more if you like) from our list and draw a 2D version of the building, so the front, back, left side, right side, roof and base. These will need to be drawn on A4 pieces of paper and, depending on the building you have selected, you will need to follow the templates suggested (template 1 for small/narrow buildings or template 2 for large/wide buildings).

The drawings of the buildings need to be in a 'colouring book' style, using clear black lines, closed shapes and simplified details for people to colour in. When looking at your building, try to look at the main features of your chosen building and include these in your drawing, like this.



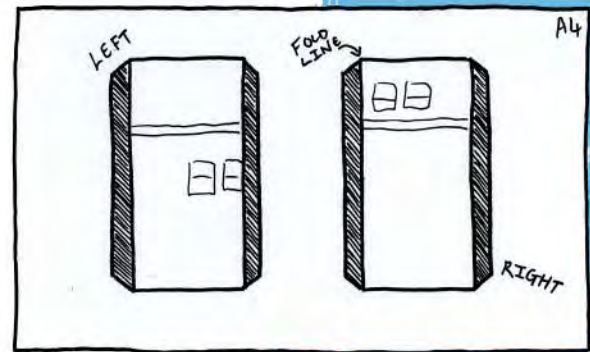
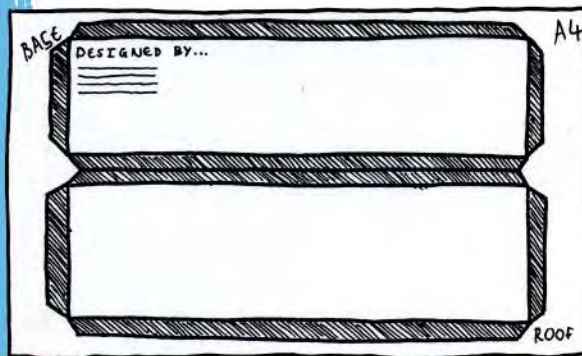
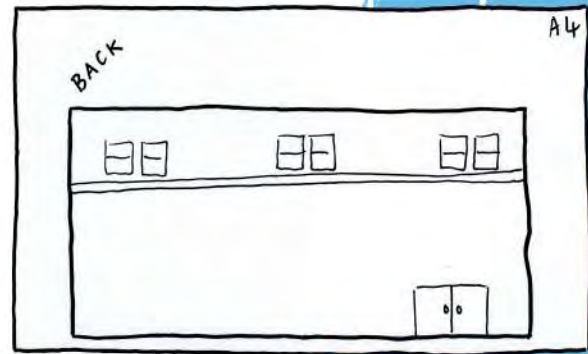
This is **template 1** for small/narrow buildings on 3 sheets of A4.

Welcome to the ISLE OF RYDESGATE

Please remember when you are drawing your building to include tabs so that they can be cut out, glued and assembled. If your building has a pitched or pointed roof, please include this in your drawing, however, keep the roof panel flat. Make a copy of your template and have a go at making your model to see how it fits together and make any changes. Here is a model of a small/narrow building using **template 1**. If it all fits well, you have cracked it!



Or have a go at using **template 2**, on 4 pages, for large/wide buildings.



To ensure that the models will fit the map, do keep the left and right panel width to 8cm plus 1cm tabs. This way both sides can be drawn next to the front panel and back panel, for **template 1**, or be drawn on 1 A4 piece of paper, for **template 2**.

Here is a model we made of a large/wide building using **template 2**.

Welcome to the **ISLE OF RYDESGATE**

Here is the list of buildings for you to choose from to make a template:

RAMSGATE

[8 Harbour St – Village Grill](#)
[11 Harbour St – Daily Grind cafe](#)
[20 Harbour St – Harbour St Bazaar](#)
[26 Harbour St – 26 Harbour cafe](#)
[29-31 Harbour St – Celandine Hall](#)
[39 Harbour St – Harbour Fish Bar](#)
[3 Queen St – Lloyds Bank](#)
[18-24 High St – Old New Look](#)
[27 High St – Card Factory/Bonmarche](#)
[46 High St – Old Grumpy Goblin/Escapism](#)
[41/45 High St – Peacocks](#)
[58 High St – Old Argos](#)

RYDE

[179 High St – New look](#)
[131 High St – Craft Studios](#)
[St Thomas' Square – NatWest](#)
[10 St Thomas' Square – Crown Hotel](#)
[170-172 High St – Boots](#)
[164 High St – The Castle Inn](#)
[153 High St – Salvation Army](#)
[29-30 Cross St – Elizabeth Packs/Shademakers](#)
[22 High St – Kids & Co](#)
[35 High St – Aspire](#)
[40 High St – Star Taverns](#)
[52 High St – Convent](#)

Who are the templates for?

The project is going out to people of all ages and abilities, so keep it simple. The building you design will be part of a craft pack and will be posted out for people to colour in and post back to Mooch to assemble into models for display. All the templates will be catalogued for the exhibition. When you have finished, please email an image (either jpg or pdf) of your template to info@mooch.co or post to Mooch at Hold Creative Space, G3A Paragon Works, Albert Street, Ramsgate, Kent CT11 9HD.

The deadline for this is Monday 31st May.

This project will get national press via Historic England and be part of a big Cultural Programme celebrating historic high streets in England and what we can do to help them survive and thrive. Search for Twin Towns on www.historicengland.org.uk or check the posts online via the hashtag **#historichighstreets**. You can also look at the Empty Shops Network online for thoughts on the future of town centres. This was founded by artist and writer Dan Thompson, who is working on the HSHAZ project with Mooch and it is full of ideas for you to explore. <https://emptyshops.wordpress.com/>

Do check out the project on www.mooch.co and follow our social media.

Good luck with making your template and we look forward to creating the model high street for the Isle of Rydesgate!